


Art.No. 9000L / 9000N

proof »standard«

**Important note:**

Offset printing is based on scale colors (CMYK). RGB or special colors are adjusted accordingly.
We do not accept liability for any resulting color deviation. There is no color accuracy with CMYK colors.

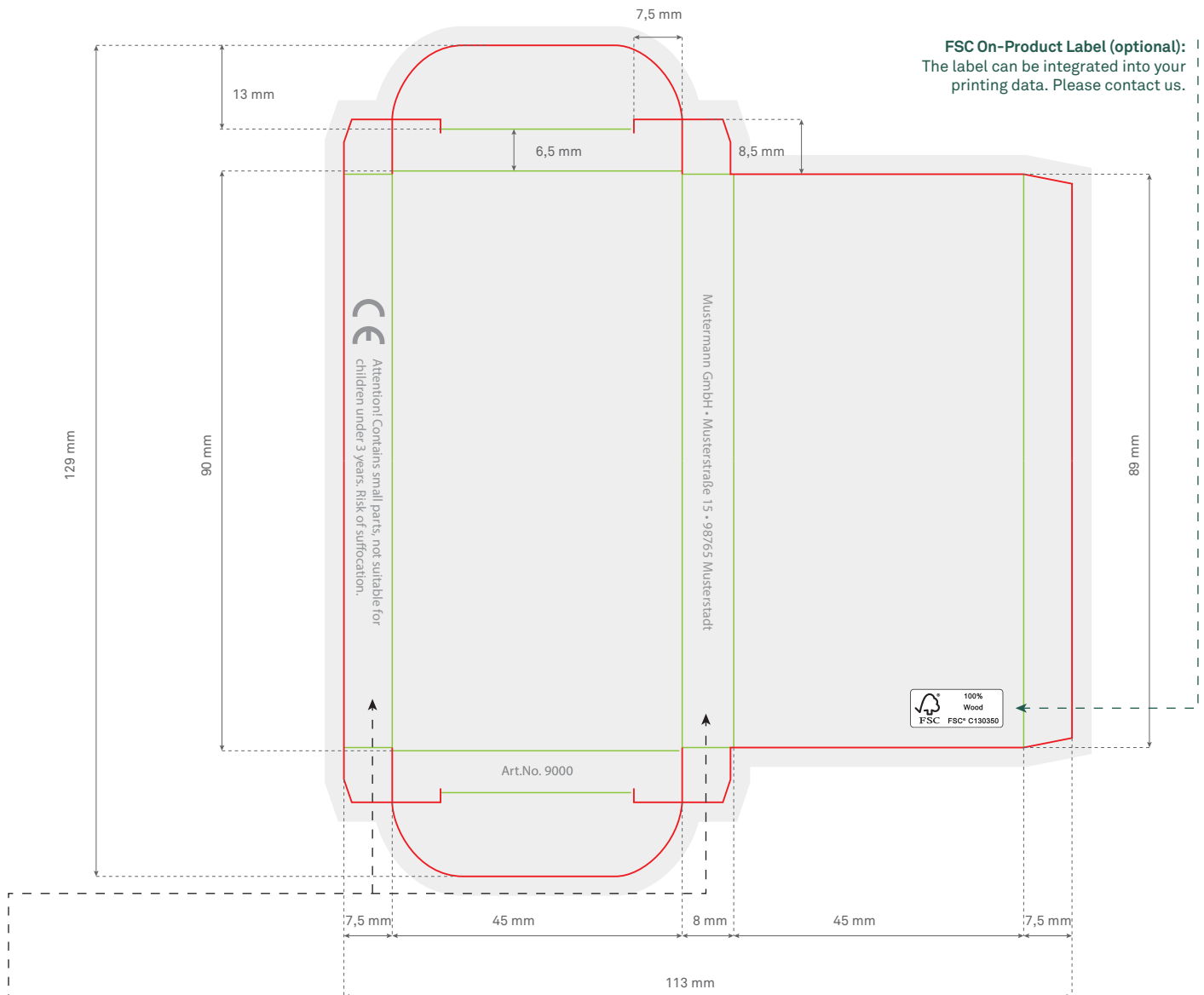
 printing area including bleed margin

Printing data requirements

- printable data
- vector/images with at least 300 dpi
- color space CMYK
- maximum 280% color

FSC On-Product Label (optional):

The label can be integrated into your printing data. Please contact us.



- Due to the EU product safety act we have the obligation to mark all of our products.
- That is why we will put labels with address of the distributor, article number and the CE-terms on all the cardboard boxes.



Print approval: please approve the print by email.

Changes / Corrections: Please send your change requests by email.

Attention! Please check this proof carefully. The colours and the printing-motif may vary from the original. After approval we cannot accept any responsibility or liability for any possible mistakes.